

You can set up an Icom radio by connecting it to a PC through a USB cable.

Read this installation guide and install the USB driver to your PC, before connecting the USB cable.

The descriptions in this guide are based on the following conditions:

- You have already downloaded the latest USB driver from the Icom Download Service website.  
<https://www.icomjapan.com/support/>
- The operating system of the PC is Windows 10.
  - ① The installation steps or displayed dialog may differ, depending on the operating system.

## TABLE OF CONTENTS

<b>1. OVERVIEW</b> .....	<b>1</b>	<b>3. INSTALLING THE DRIVER</b> .....	<b>3</b>
System requirements .....	1	<b>4. FOR YOUR REFERENCE</b> .....	<b>5</b>
<b>2. PRECAUTIONS</b> .....	<b>2</b>	4-1 COM Port setting .....	5
Before the installation .....	2	4-2 Uninstalling the driver .....	6
Before connecting to a PC .....	2	4-3 Audio considerations .....	6
After the installation .....	2		
Important.....	2		
About compatible radios .....	2		

## 1. OVERVIEW

### System requirements

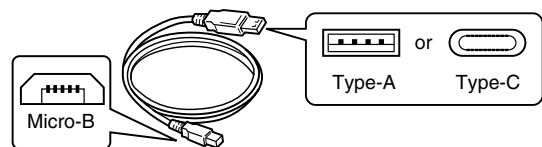
The following hardware and software are required:

#### PC

- Microsoft Windows 10 (32/64 bit)
- Microsoft Windows 8.1 (32/64 bit)\*
- \*Except for the "RT" version.
- A USB 1.1, 2.0, or 3.0 port

#### Cable

- A USB cable



#### NOTE:

- Purchase the proper USB cable according to your PC's USB port.  
 For the Type-A port: User supplied  
 For the Type-C port: OPC-2418 (optional)
- Use a USB cable for data communication. You cannot set up the radio with a cable that is made for charging only.
- Depending on the length of a third-party USB cable, the radio may not work correctly, even if the PC recognizes it. Use a cable that is as short as possible.

## 2. PRECAUTIONS

### Before the installation

---

- When installing the driver, confirm Windows has completed its startup, and then log in as the administrator.
- Confirm no other application is running.

### Before connecting to a PC

---

- The USB driver does not support the automatic recognition system. **NEVER** connect the USB cable between the radio and the PC until AFTER the USB driver has been installed.  
See "Installing the driver" on page 3 for details.  
Once the driver has been installed, a PC software can be used by just connecting the USB cable.
- Directly connect the radio and the PC. Icom is not responsible for improper operation when connecting them through a USB hub.

### After the installation

---

- **Uninstalling the USB driver**  
You cannot uninstall the USB driver for individual device. After uninstalling the USB driver, none of the devices that require this driver can be recognized by the PC.
- **When another radio is connected**  
A COM port number is automatically added after turning ON the device.

### Important

---

- Depending on your PC performance (OS, environment, and so on), the USB audio may be interrupted, or a control by the PC software may get delayed.
- If the CPU has a heavy load, the USB audio is easily interrupted.
- The settings of the installed audio player may be changed after connecting the radio to the PC.

### About compatible radios

---

- The radios that require this driver are shown on the Icom website.  
<https://www.icomjapan.com/support/>

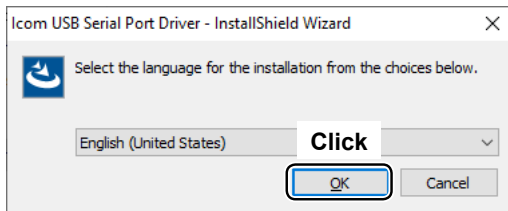
### 3. INSTALLING THE DRIVER

**NOTE:**

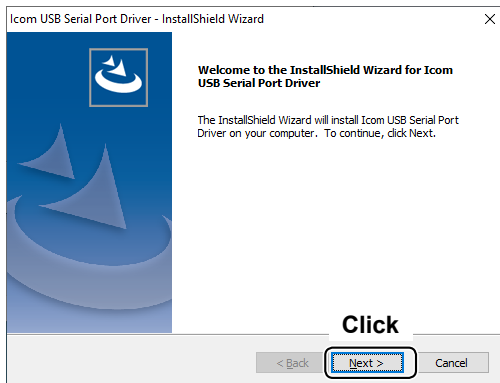
- **NEVER** connect the USB cable between the radio and the PC until the USB driver has been installed. Disconnect the cable, if connected, before starting the USB driver installation.
- This USB driver does not support the automatic recognition system.

① The displayed dialog, indications, or operations may differ slightly from the following instructions, depending on your system version and settings.

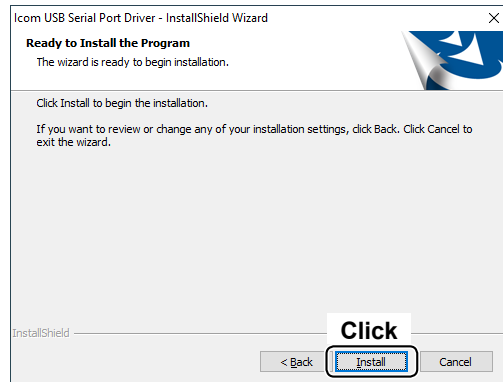
1. Log on the PC as the administrator. Confirm that the radio and PC are not connected, and no other application is running.
2. Extract the downloaded USB driver, and then open the folder that contains the installer.
3. Double-click the following file:
  - For the 32 bit version OS: setup32.exe
  - For the 64 bit version OS: setup64.exe
4. When the “User Account Control” dialog is displayed, click <Yes>.
5. When the language select window is displayed, click <OK>.



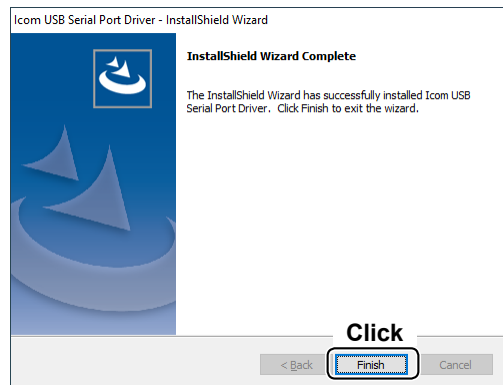
6. When the install screen is displayed, click <Next>.



7. When the “Ready to Install the Program” dialog is displayed, click <Install>.



- Windows starts installing the driver.
8. After the installation has completed, click <Finish>.

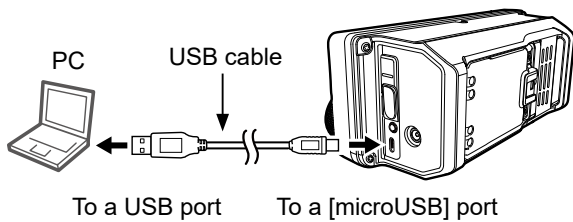


(US) Continued on the next page)

### 3. INSTALLING THE DRIVER

9. Connect the USB cable between the radio and the PC, as shown below. Then, turn ON the radio's power.

① Confirm the USB cable connector shape.



10. The installation icon is displayed on the taskbar as shown below, and then Windows starts installing the driver.



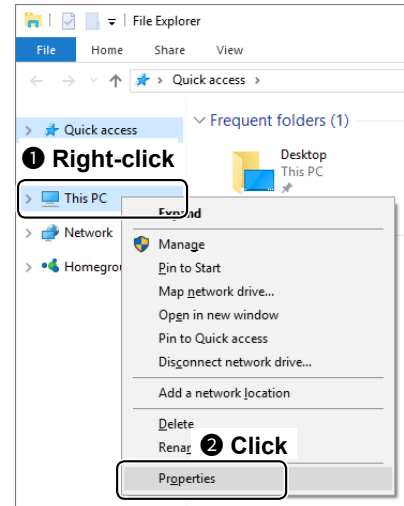
- After the driver installation has completed, the installation icon disappears.
- Depending on your system version or setting, you may be prompted to restart the PC. In this case, follow the instructions on the screen.

After the driver installation has completed, confirm the port connection and port number.

11. Click the folder icon on the taskbar.

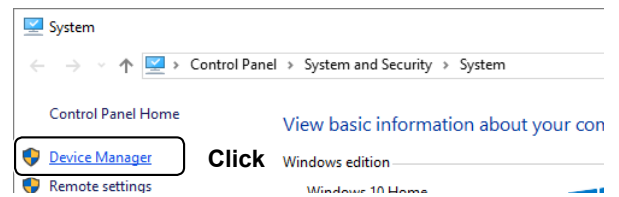


12. Right-click "This PC," and then click "Properties."

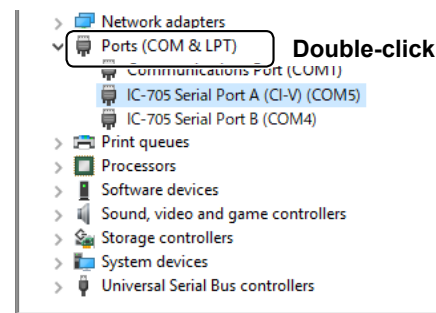


13. Click [Device Manager].

- The "Device Manager" screen is displayed.



14. Double-click "Ports (COM & LPT)" on the "Device Manager" screen.



- When the driver is completely installed, "IC-705 Serial Port A (CI-V) (COM\*)" is displayed. The screen is an example of the USB serial COM port number "5."

- The COM port number may differ, depending on the PC environment.
- If "!" or "x" is displayed on the "Device Manager" screen, the driver may not correctly be installed. In such a case, uninstall the USB driver, and then reinstall it.

# 4. FOR YOUR REFERENCE

After the PC and radio are connected, you can remotely control the radio using the CI-V commands. The radio has a conversion function between USB and Serial.

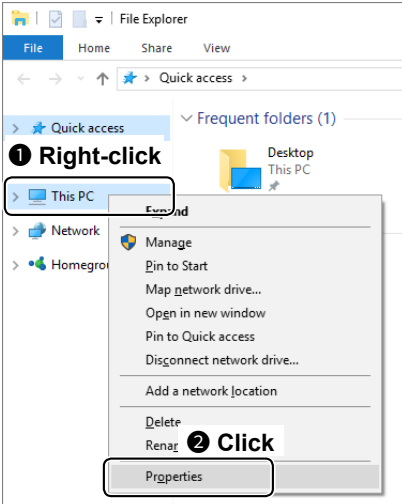
## 4-1 COM Port setting

To change the COM Port number setting after you have installed the USB driver, connect the radio to the PC first, and then turn ON the device.

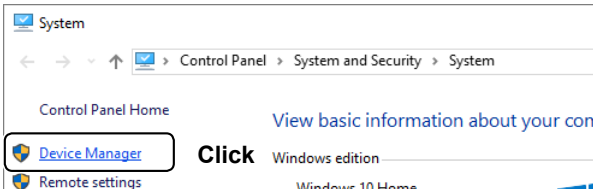
1. Click the folder icon on the taskbar.



2. Right-click "This PC," and then click "Properties."



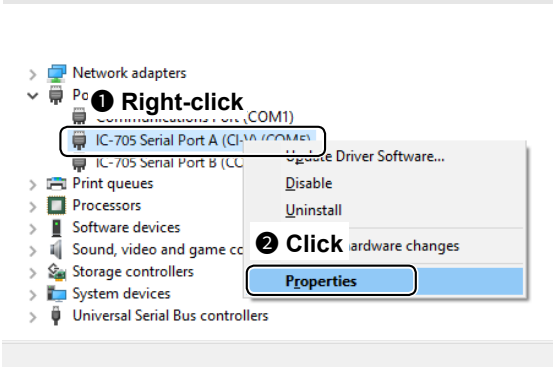
3. Click [Device Manager].



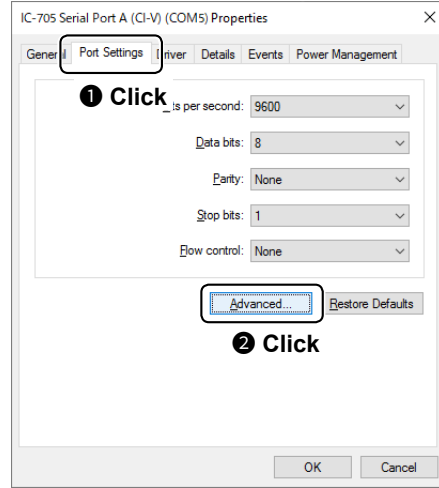
- The "Device Manager" screen is displayed.

4. Right-click "IC-705 Serial Port A (CI-V) (COM\*)," and then click "Properties."

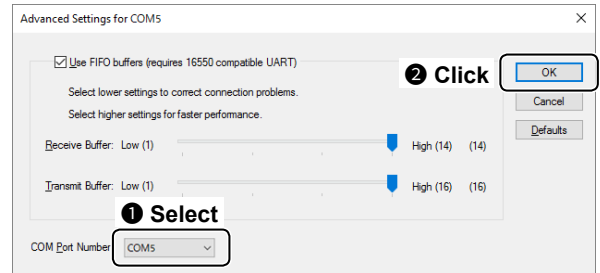
The COM port number is displayed instead of "\*." If the radio has two COM ports, two COM port numbers are displayed.



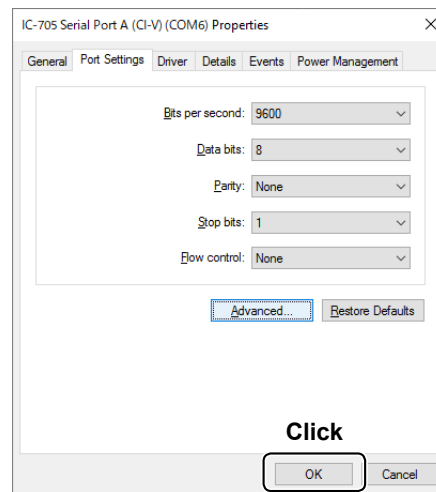
5. Click the [Port Settings] tab, and then click <Advanced...>.



6. Select the COM port number, and then click <OK>.



7. Click <OK> to close the screen.



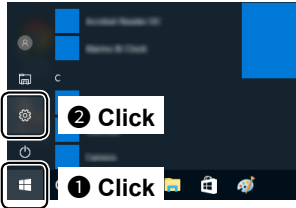
After changing the COM port number, you may not be able to immediately use the selected COM port number. In this case, disconnect the USB cable once, and then reconnect the cable.

## 4. FOR YOUR REFERENCE

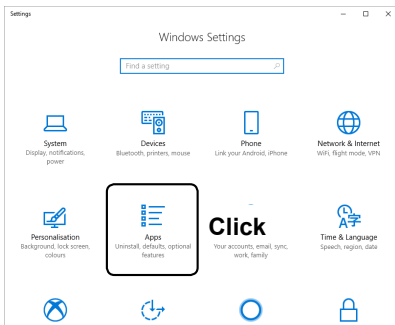
### 4-2 Uninstalling the driver

The displayed dialogs or indications may differ slightly from the following instructions, depending on your system version and settings.

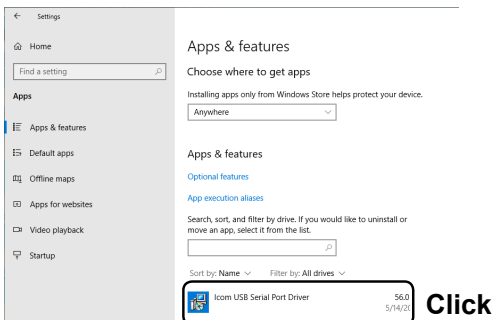
1. Click the Windows icon on the taskbar, then click the [Setting] icon.



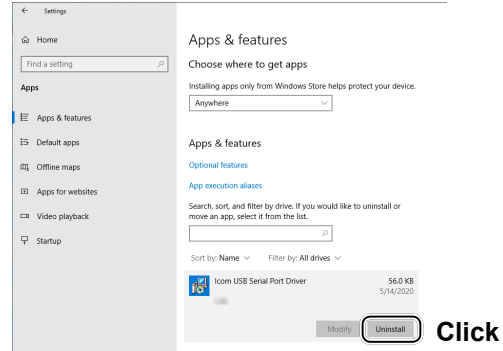
2. Click [Apps].



3. Click "Icom USB Serial Port Driver."



4. Click <Uninstall>.
  - When the "User Account Control" dialog is displayed, click <Continue>.



5. Follow the instructions on the screen to uninstall.

### 4-3 Audio considerations

- For modulation input from the PC, the radio's USB port must be set as the modulation input source connector. You can set the modulation input source connector in the radio's Set mode, or using CI-V system commands. See the instruction manual of your radio for details.
- If you want to monitor the received audio through the PC's speaker or use the audio from the PC's microphone as the modulation input, see the instruction manual of your audio software.